



METROPOLITAN 270



Lot 88 Viewpoint Street, Shoal Point | Size 700m²

🏠 4 🛁 2 🚗 2 🏠 267.71 sqm

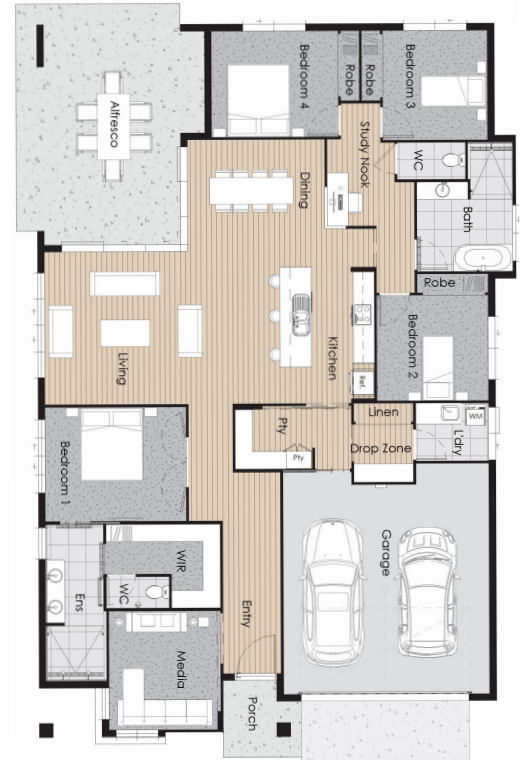
From

\$1,040,580*

🏠 244.88 sqm

Key Features

- AC to Bed 1 and Living Areas
- Kitchen features stone benchtops
- Vinyl Plank flooring to living areas
- Solar
- Exposed Aggregate Driveway



In partnership with Gemini Homes - Mackay.

CONTACT US TODAY

Sales Manager

M 0407 424 692

E sales@pointglen.com.au

POINTGLEN

Price correct at 03/06/26 and is subject to change without notice or obligation. Pointglen Developments is only responsible for the sale of the land only. Incidental costs are excluded such as stamp duty, registration fees, legal costs. Customers will need to enter into a separate contract with the relevant builder for construction of the home. Some features including landscaping and façade shown may not be excluded. Buyers should review the land and building contracts carefully, make their own inquiries and obtain independent advice before proceeding. Illustrations and information are intended to be indicative only.